



Datasheet

Radar Level Transmitter

AI-RL902



## Datasheet

### Radar Level Transmitter AI-RL902

AI-RL902 radar level meter adopted 26G high frequency radar sensor, the maximum measurement range can reach up to 70 meters. Antenna is optimized further processing, the new fast microprocessors have higher speed and efficiency can be done signal analysis, the instrumentation can be used for reactor, solid silo and very complex measurement environment.

#### Applications

- Chemical industry
- Solids level measurement
- Sewage treatment
- Mining industry
- Paper and Pulp Industry
- Boiler Engineering
- Liquid and solid powder measure
- Acids, bases or other corrosive media



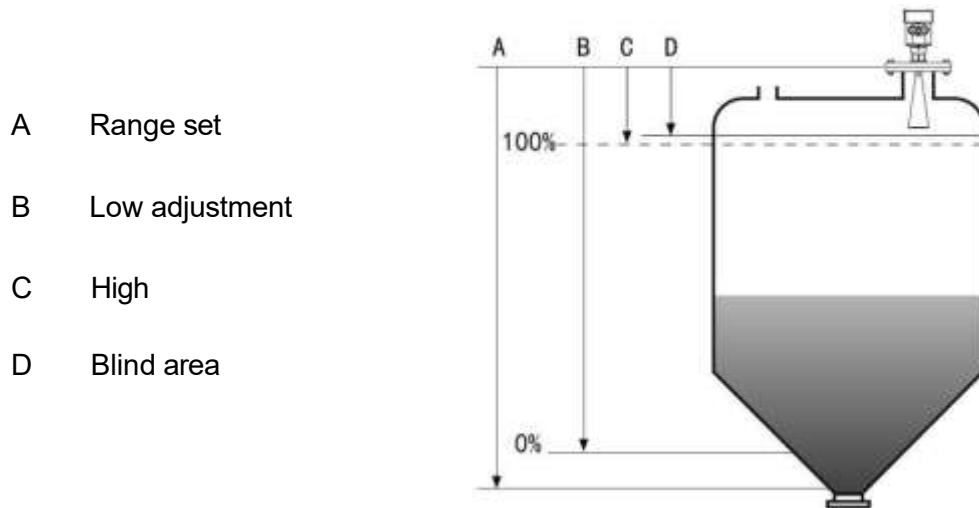
#### Features

- Small antenna size, easy to install;
- Almost no corrosion, bubble effect;
- Serious dust environment on the high level meter work has little effect;
- Beam angle is small, the energy is concentrated;
- The measuring range is smaller, for a measurement will yield good results;
- High signal noise ratio, the level fluctuation state can obtain a better performance;
- High frequency measurement of solids and low dielectric constant of the medium;

#### Radar Level Transmitter

## Principle

Radar level transmitter antenna microwave pulse is narrow, the downward transmission antenna. Microwave exposure to the medium surface is reflected back again by the antenna system receives, sends the signal to the electronic circuit automatically converted into level signals (because the microwave propagation speed, electromagnetic wave to reach the target and the reflected back to the receiver this time is almost instantaneous).



**Datum measurement:** Screw thread bottom or the sealing surface of the flange.

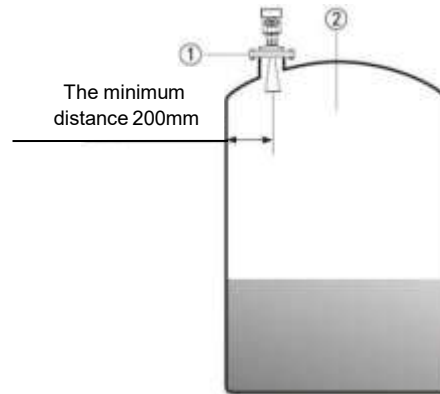
**Note:** Make sure the radar level meter the highest level cannot enter the measuring blind area (Figure D shown below).

Parameters	
Application	Slightly corrosive liquid
Measuring range	30 m
Process connection	Thread, flange
Process temperature	-40°C~250°C
Process pressure	-0.1 ~ 4.0 MPa
Accuracy	± 3mm
Ingress protection	IP67
Frequency range	26GHz
Supply	2-wire (DC24V) / 4-wire (DC24V / AC220V)
Signal output	4-20mA / HART (2-wire / 4-wire) RS485 / Modbus
Outer covering	Aluminum / plastic / stainless steel

## Installation

Be installed in the diameter of the 1/4 or 1/6.

Note: The minimum distance from the tank wall should be 200mm.



Note: ① Datum

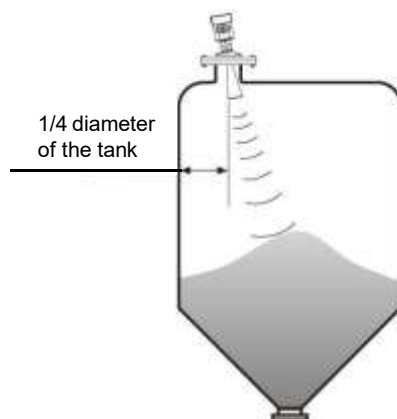
② The container center or axis of symmetry

- The top conical tank level, can be installed at the top of the tank is intermediate, can guarantee the measurement to the conical bottom.



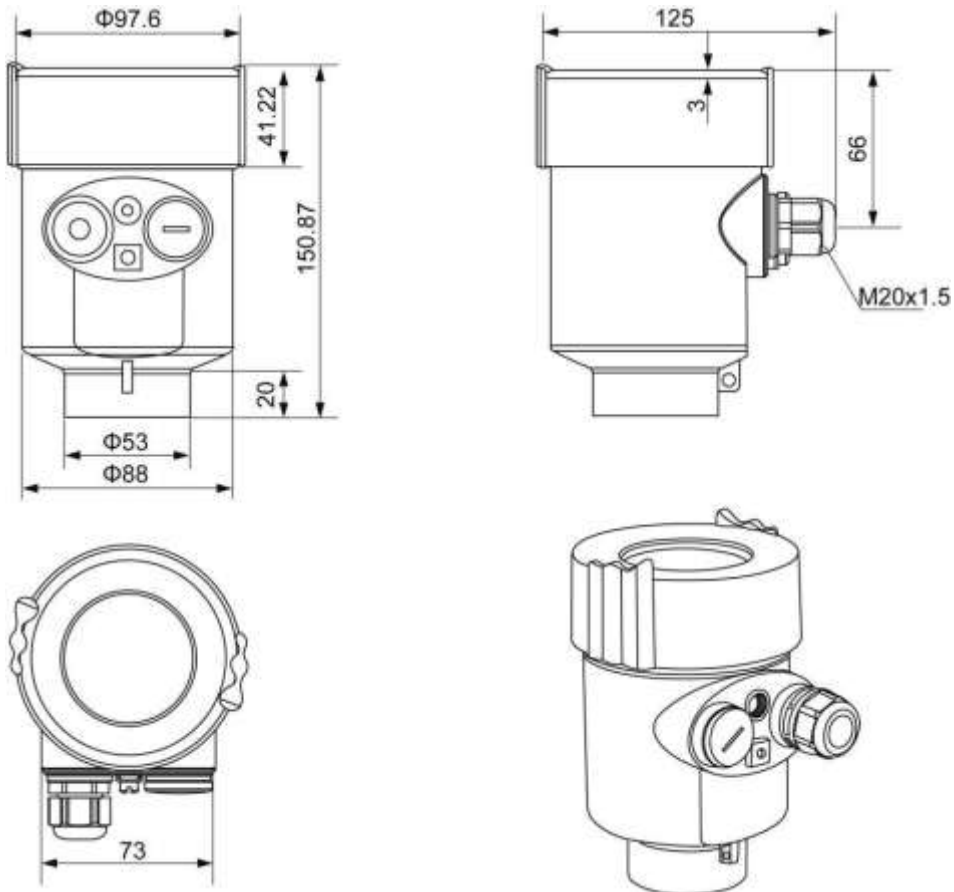
- A feed antenna to the vertical alignment surface. If the surface is rough, stack angle must be used to adjust the angle of cardan flange of the antenna to the alignment surface.

(Due to the solid surface tilt will cause the echo attenuation, even loss of signal.)

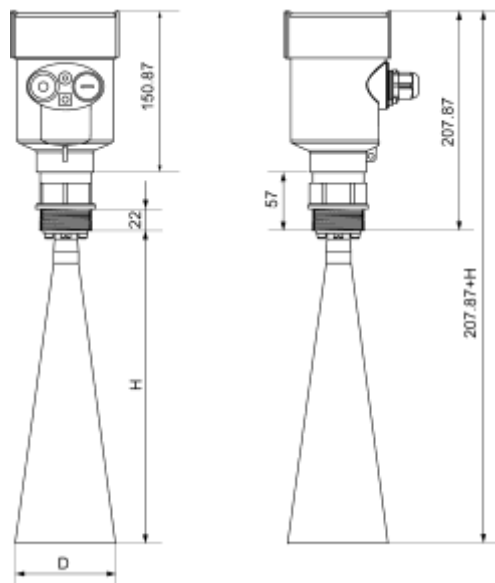


## Dimensions

■ The outer shell:

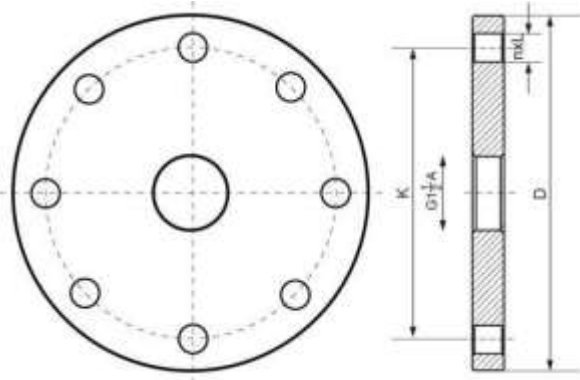


■ Appearance size:



Flange	Trumpet diameter D	Trumpet height H
DN50	$\Phi 46$	140
DN80	$\Phi 76$	205
DN100	$\Phi 96$	290

■ Flange type:

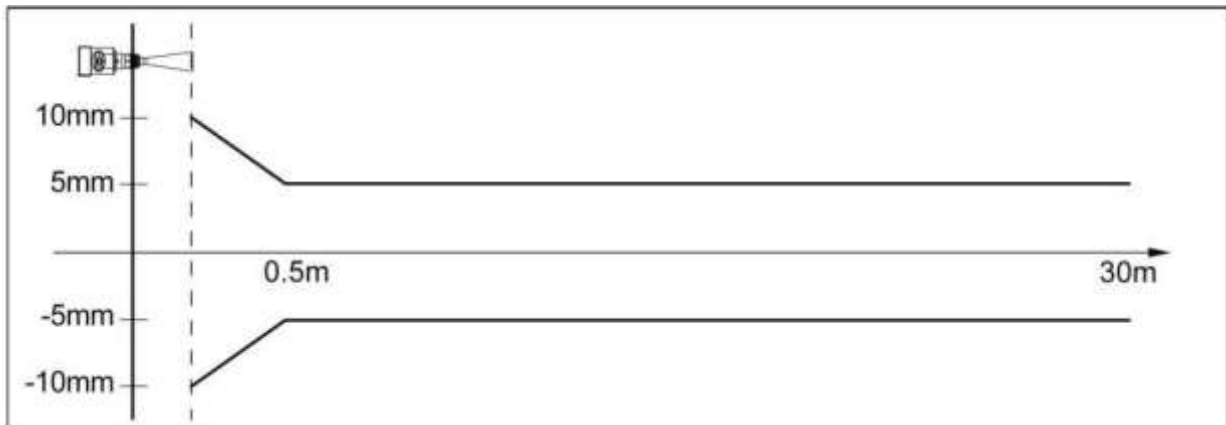


Flange Selection Tables				
Specification	Outer diameter D	Hole center distance K	Number of Holes n	Hole diameter L
DN50	Φ165	Φ125	4	18
DN80	Φ200	Φ160	8	18
DN100	Φ220	Φ180	8	18
DN125	Φ250	Φ210	8	18
DN150	Φ285	Φ240	8	22
DN200	Φ340	Φ295	12	22
DN250	Φ405	Φ355	12	26

Meter Linearity

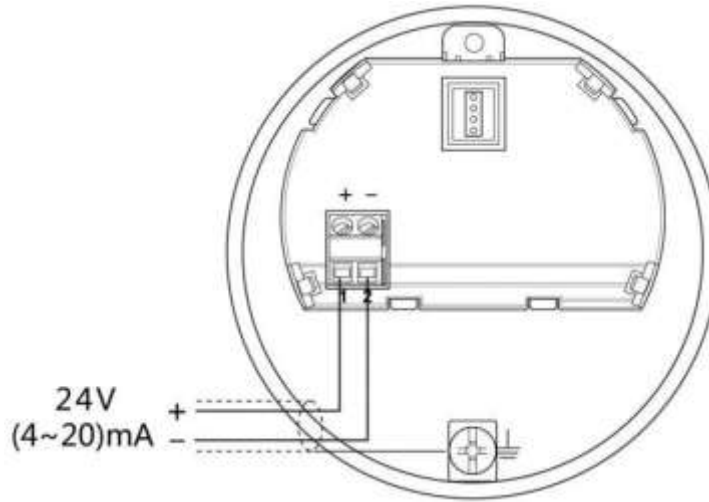
■ AI-RL902

- Emission angle      Depending on the size of the antenna
- Φ 46mm                      18°
- Φ 76mm                      12°
- Φ 96mm                      8°
- Φ 121mm                    6°
- Precision                      See chart

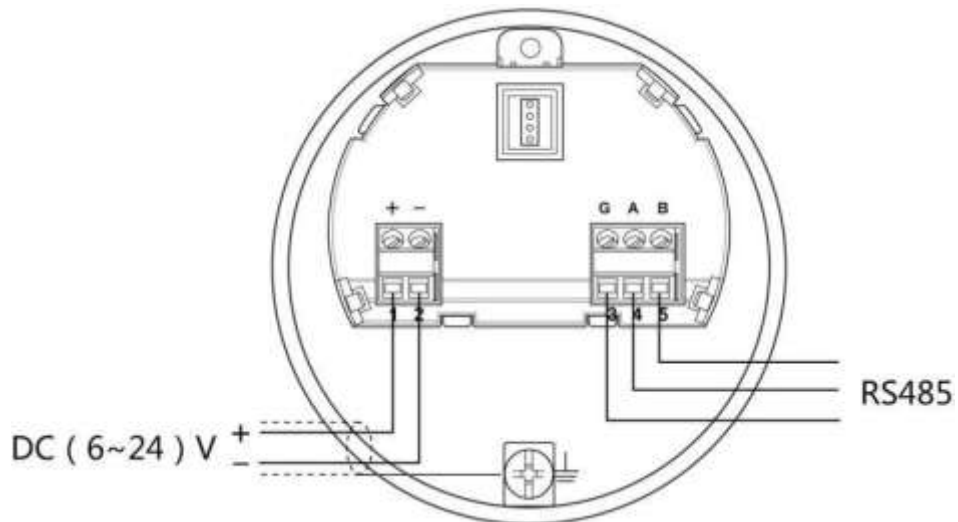


## Wiring

- 24V two wire wiring diagram as follows:



- 6~24V RS485/Modbus wiring diagram as follows:



## Ordering Code

AI-RL902-A-05-KC-A2-LG-TE-WH-00								Description
AI-RL902	-	-	-	-	-	-	-	
Measuring Medium	A							Liquid
		05						5m
		10						10m
Measurement Range		15						15m
		20						20m
		30						30m
		XX						Others
			KC					Horn Mouth H205mm × Φ 76mm 304SS
Antenna Type			KD					Horn Mouth H205mm × Φ 76mm 316LSS
			KJ					Horn Mouth H290mm × Φ 96mm 304SS
			KK					Horn Mouth H290mm × Φ 96mm 316LSS
				A2				Two-wire 4-20mA+HART
Output and Power Supply				SC				4-20mA+HART, 24VDC
				R2				RS485, 24VDC
				XX				Others
					LG			G1 1/2 304SS
					LN			NPT1 1/2 304SS
					LH			G1 1/2 316LSS
					LP			NPT1 1/2 316LSS
					FE			HG/T20592 PN10/25 DN80 304SS
					HA			HG/T20592 PN10/25 DN80 Swivel 304SS
					FK			HG/T20592 PN10/25 DN80 316LSS
Thread Type					HE			HG/T20592 PN10/25 DN80 Swivel 316LSS
					FF			HG/T20592 PN10/16 DN100 304SS
					FH			HG/T20592 PN10/16 DN150 304SS
					HB			HG/T20592 PN10/16 DN100 Swivel 304SS
					FL			HG/T20592 PN10/16 DN100 316LSS
					FX			HG/T20592 PN10/16 DN150 316LSS
					HF			HG/T20592 PN10/16 DN100 Swivel 316LSS
					XX			Others
High Temperature Resistance						TE		-40-130°C
						TH		-40-230°C
Electrical Interface, Housing Material, and Ingress Protection							WH	M20 × 1.5 Cable Gland, Aluminum Alloy, IP67
Explosion-Proof Option							00	None
							E4	CNEX Ex db II C T6 Gb